

052591

RECEIVED  
LARAMIE COUNTY  
CHEYENNE, WY.

CERTIFIED LAND CORNER RECORDATION

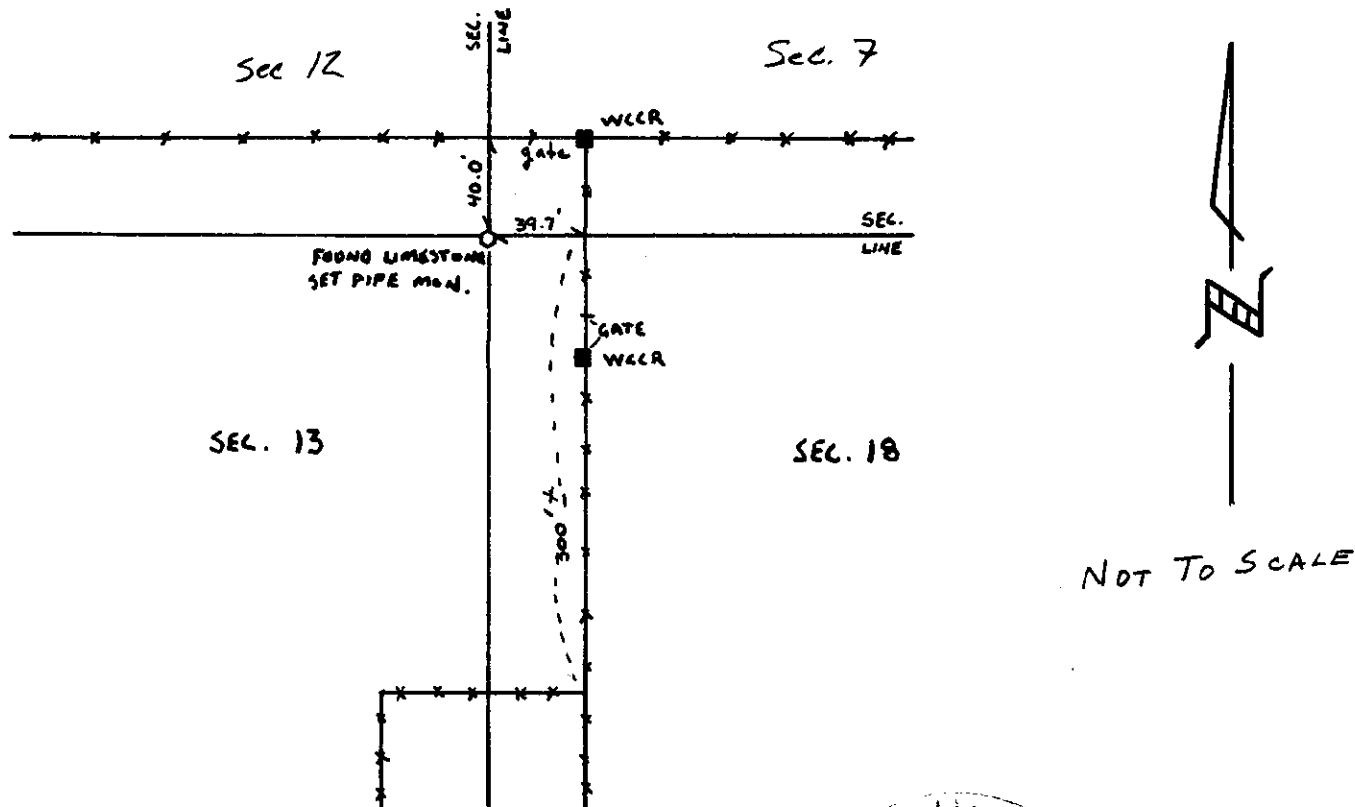
88 DEC 23 AM 9 09

DESCRIPTION OF CORNER EVIDENCE FOUND, AND ORIGINAL RECORD (If known)  
Found: Limestone, approx. 4" x 6" with top about 4" below ground. Top of stone is quite broken and crumbled. Remains of old hub at stone. Used witness corners to confirm position.  
Accessories found - See notes on back.  
GLO: Set a lime stone 20" x 8" x 5" for corner to sections 12 & 13.

Sec. 12 | Sec. 7  
-----  
Sec. 13 | Sec. 18  
T 13N  
R 65W R 64W

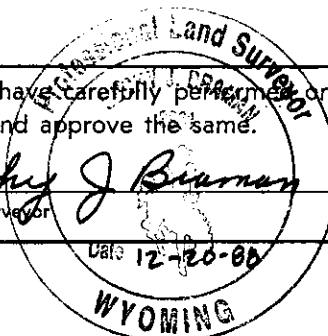
DESCRIPTION OF MONUMENT AND ACCESSORIES ESTABLISHED TO PERPETUATE THE ORIGINAL LOCATION OF THIS CORNER:  
Set: Set aluminum pipe monument, 2" i.d., 36" long, with 3" aluminum cap. Left stone remains as memorial. See Map of Survey filed with Laramie County Clerk for dimensions to adjacent corners.

SKETCH, WITH COURSE AND DISTANCE TO ADJACENT CORNER IF DETERMINED IN THIS SURVEY.  
(May Sketch or Paste Reproduction on Reverse Side.)



I, BECKY J. BRAMAN certify that I have carefully performed or reviewed the work done on the diagrammed corner as reported on this recordation form and approve the same.

Becky J. Braman PLS 3881  
Signature of Surveyor Registration No.



STATE OF WYOMING,  
Office of Clerk and Recorder,  
County of LARAMIE

This "corner record" was filed for record on the \_\_\_\_\_ day of \_\_\_\_\_, 19\_\_\_\_, was noted on the cross-index plat and is assigned page No. \_\_\_\_\_, in book No. \_\_\_\_\_.

County Official

Cross Index No. <u>J1</u>	T. <u>13N</u>	R. <u>64 W</u>	Mer.
<u>J25</u>	T. <u>13N</u>	R. <u>65 W</u>	Mer.
_____	T. _____	R. _____	Mer.
_____	T. _____	R. _____	Mer.
_____	T. _____	R. _____	Mer.
_____	T. _____	R. _____	Mer.
_____	T. _____	R. _____	Mer.

Witness corner - Granite stone lying 56 1/2 feet northeast from corner stone. WCCR stone is lying on ground at fence corner, probably fallen to the north with chiseled "WCCR" on top (was south) face. Measured from base (south end).

Witness corner - Granite stone lying 56 1/2 feet southeast from corner stone. Set on south side of gate post. Has "WCCR" on south face, may be disturbed, but WCCR stone to WCCR stone measures 80.0 feet.

Note: Laramie County Engineer's office has no specific notes on the witnessing of this road, but other notes, especially the Chalk Bluffs Road notes, show corners set 40 feet to the East and West of North-South road and set at 56.4 feet diagonally from intersections, usually NE and NW.